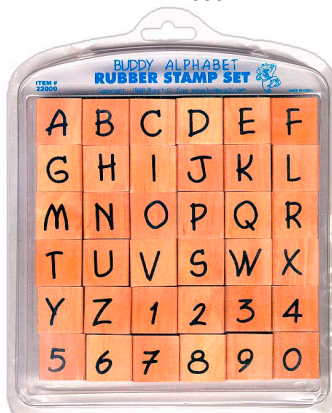




BIG ALPHABET SETS

BUDDY ALPHABET

A hand-printed and casual type style for friendly correspondence.
ITEM # 22000



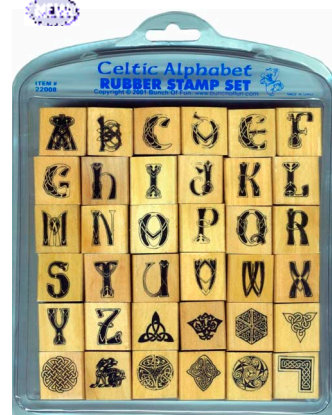
CHIP ALPHABET

Hand-carved look of wood, great for your camping scrapbook pages!
ITEM # 22004



CELTIC ALPHABET

Twenty six ornate Celtic-inspired letters along with ten Celtic designs (which look great as temporary tattoos).
ITEM # 22008



ORIENTAL BRUSH ALPHABET

Count on these stamps when you want to add an oriental look & feel.
ITEM # 22001



DOT ALPHABET

Easy-going hand lettered look works well on greeting cards, scrapbooks, tags, and so much more!
ITEM # 22005



GREEK ALPHABET

This Greek alphabet contains 24 letters along with 12 Greek-themed pictures. Stamp your fraternity / sorority letters on envelopes, cheques, anything! Includes a pronunciation guide.
ITEM # 22009



SAUSAGE ALPHABET

When you want big, bold letters, the Sausage stamp set will do the trick.
ITEM # 22002



CHINESE CHARACTERS

A great collection of Chinese characters for all your Oriental projects, looks good as a temporary tattoo also! Note: English translation does not stamp out, only the Chinese writing.
ITEM # 22006



FOURTH OF JULY

Letters & numbers embedded with stars & stripes. Would look great in your scrapbook with your fireworks photos.
ITEM # 22010



RUBBER STAMP SET

Use the sign language alphabet & number set to make greeting cards, party invitations or wrapping paper...use your imagination! Note that both the hand sign and the letter/number stamp out.
ITEM # 22003



TYPEWRITER ALPHABET

Classic typewriter look. We also have a smaller version of this on the next page.
ITEM # 22007



• Each set contains 36 stamps.

• The hourglass-shaped handles are made of 3/4" thick varnished wood measuring 1" x 1".

• Closely trimmed and deeply etched red rubber gives you a great impression every time.

• 1/8" thick foam cushion keeps the ink off the wood and on the rubber.

• The top of each stamp is indexed in black ink.

• Each set is packaged in a reusable plastic storage case.



SMALL ALPHABET SETS

TYPEWRITER ALPHABET

The classic look of typewriter text.
ITEM # 22200



FIESTA ALPHABET

Use this for party invitations, scrapbook pages of vacations to Mexico & more!
ITEM # 22203

lower case typewriter

Looks great when used in combination with the Upper Case Typewriter set.
ITEM # 22206



ORIENTAL BRUSH

This set works great as a smaller size of item #22001 on the previous page.
ITEM # 22204

CARTOON ALPHABET

Great for birthday cards, for kids, for fun!
ITEM # 22201



CHINESE CHARACTERS

This is a smaller version of item #22006 shown on the previous page. Note: The English translation does not stamp out, it's only printed on the top of the wood.
ITEM # 22205

CURLY ALPHABET

Dainty & whimsical, this alphabet is a must for every stamper.
ITEM # 22202



Each wood peg measures $\frac{1}{2}'' \times \frac{1}{2}'' \times 1\frac{1}{2}''$ (12.7mm x 12.7mm x 38mm) and includes a reusable plastic storage case, 36 stamps in all!

DOUBLE-SIDED SETS

These double-sided stamp sets feature two stamps on each wood block. Each block measures about $1'' \times 3\frac{3}{4}'' \times 3\frac{3}{4}''$ thick. Truly a great value!



HOME SWEET HOME ALPHABET

The comfortable feeling of home will come out well with this stamp set.

ITEM # 22101

The second side of each stamp has the lower case equivalent plus some punctuation marks.

HALLOWEEN ALPHABET

Spooky letters and equally scary pictures for your Halloween projects.

ITEM # 22100

The second side of this stamp set has Halloween-themed pictures, shown below.



THESE STAMPS ARE AVAILABLE FROM:

DISCOVER THE JOY OF STAMPING WITH

BUNCH OF FUN®